



**M & J
DEVELOPERS**

THE COMMONS AT SUMMIT LAKES

Features:

- This Community offers 15 Large Wooded Lots including several PRIME WATERFRONT LOTS
- Lots varying in size from 0.92 to 3.51 acres.
- A 25 Acre Recreation Lake with Community Area (accessed via Explorer Rd off of NC 150)

CONTACT US

(336) 601-7259

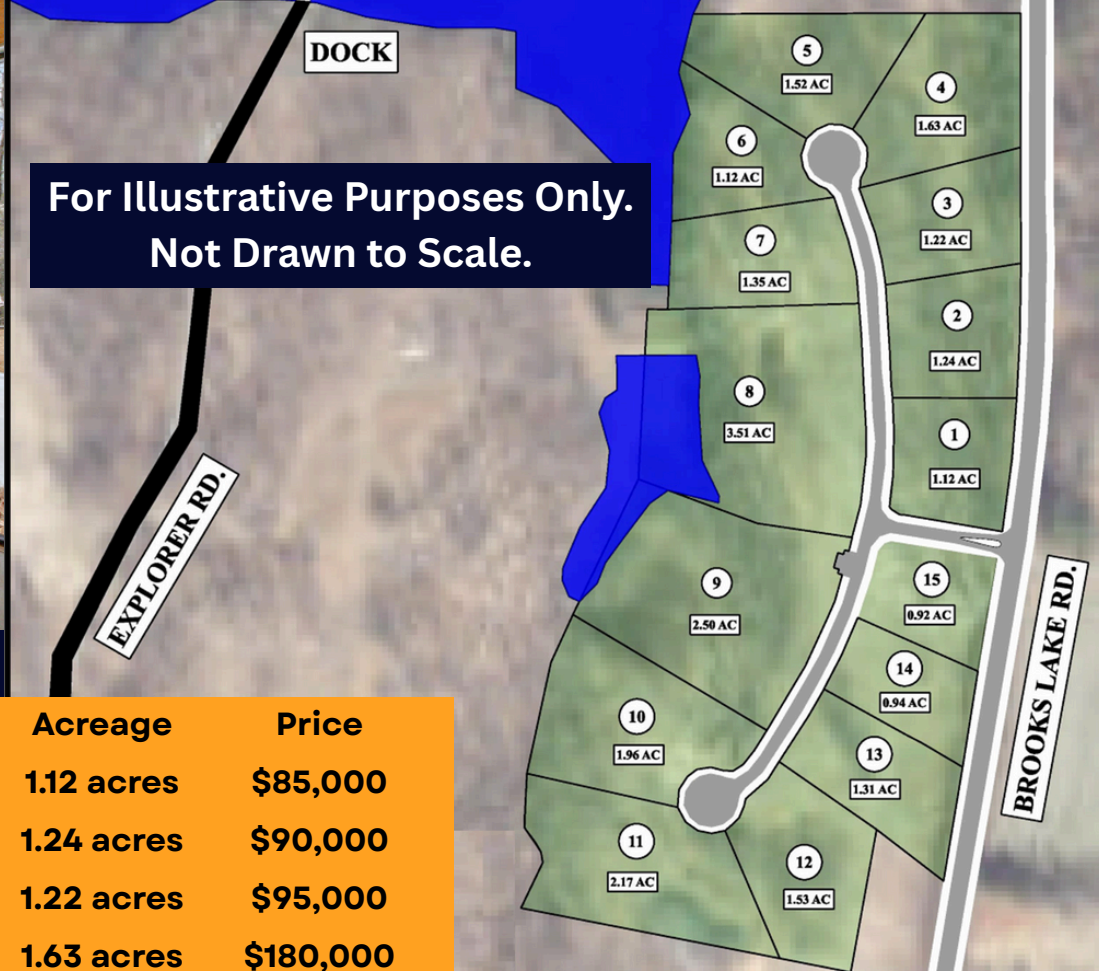
(336) 587-3673

3714 Alliance Dr, Suite 300,
Greensboro, NC 27407.



**A Beautiful New
Neighborhood brought to
you by M & J Developers
and Advantage Build.**

www.mjdevelopers.com/the-commons-at-summit-lakes



THE COMMONS AT SUMMIT LAKES

COMMUNITY INFORMATION

Located in quiet, tranquil Browns Summit, giving residents the best access to the benefits of Greensboro and Reidsville, while having the small town community charm Browns Summit is known for.

M & J DEVELOPERS INC. & ADVANTAGE BUILD

3714 Alliance Dr. Suite 300,
Greensboro, NC 27407.

Lot Number	Acreage	Price
1	1.12 acres	\$85,000
2	1.24 acres	\$90,000
3	1.22 acres	\$95,000
4	1.63 acres	\$180,000
5	1.52 acres	\$230,000
6	1.12 acres	\$215,000
7	1.35 acres	SOLD
8	3.51 acres	\$200,000
9	2.50 acres	\$190,000
10	1.96 acres	\$115,000
11	2.17 acres	\$115,000
12	1.53 acres	Home for Sale
13	1.31 acres	\$99,000
14	0.94 acres	\$90,000
15	0.92 acres	\$85,000

INTERESTED? CONTACT US:

(336) 601-7259
(336) 587-3673

