



**M & J  
DEVELOPERS**

## **SANFORDS CREEK**

### **Features:**

- 32 Premier Homesites
- Energy Star 3.0 Homes
- Cul-de-sac lots available
- Lot sizes 0.46 - 0.84 acres.
- Custom Home Plan Designs
- Guilford County Schools - Colfax Elementary School, Northwest Middle & High School.

### **CONTACT US**

**(336) 601-7259**

**(336) 587-3673**

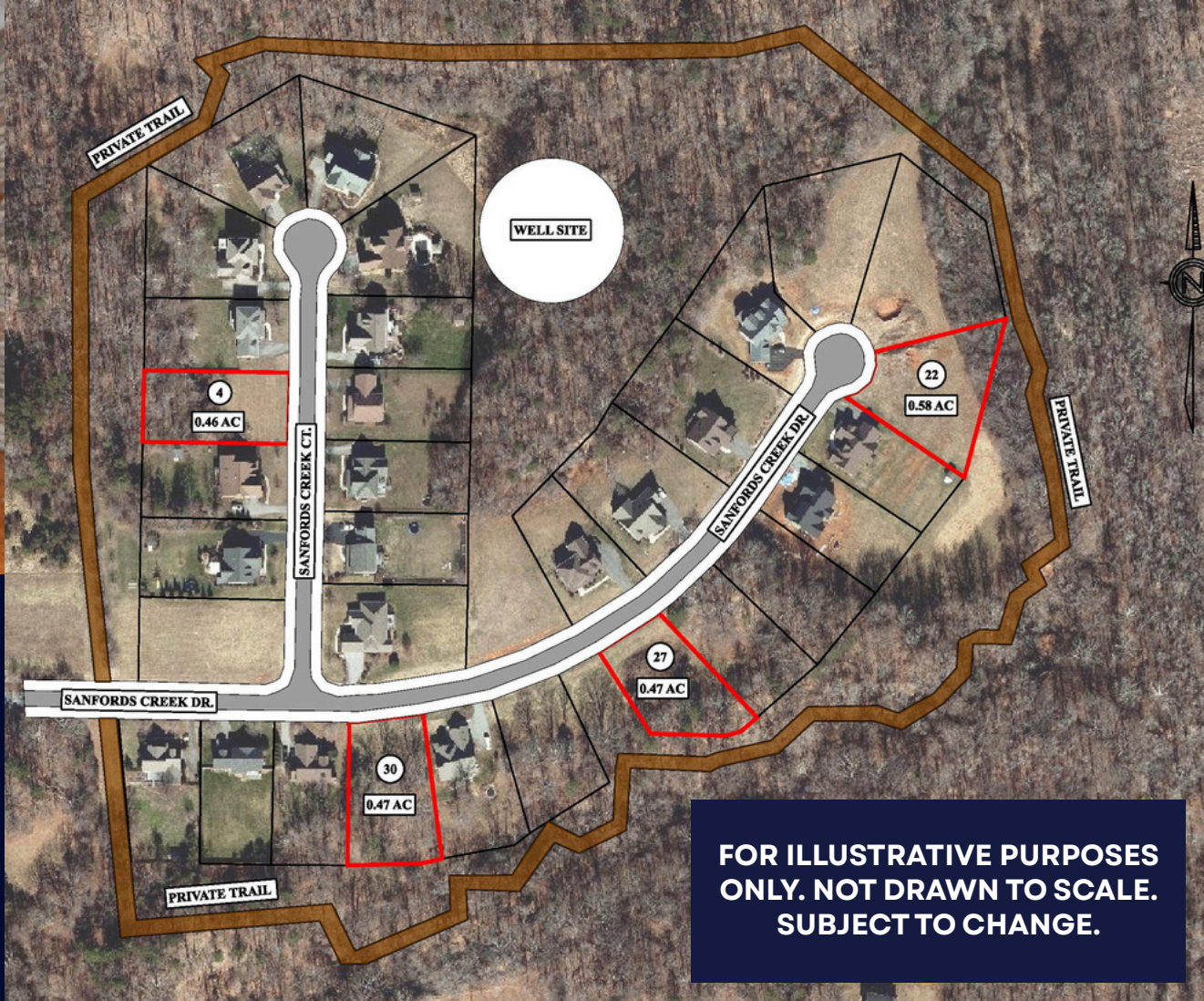
3714 Alliance Dr, Suite 300,  
Greensboro, NC 27407.



A Beautiful New  
Neighborhood brought to  
you by M & J Developers  
and Advantage Build.

**[www.mjdevelopers.com/sanfords-creek](http://www.mjdevelopers.com/sanfords-creek)**





**FOR ILLUSTRATIVE PURPOSES  
ONLY. NOT DRAWN TO SCALE.  
SUBJECT TO CHANGE.**

(336) 587-3673