



**M & J
DEVELOPERS**

SANFORDS CREEK

Features:

- 32 Premier Homesites
- Energy Star 3.0 Homes
- Cul-de-sac lots available
- Lot sizes 0.46 - 0.84 acres.
- Custom Home Plan Designs
- Guilford County Schools - Colfax Elementary School, Northwest Middle & High School.

CONTACT US

(336) 601-7259

(336) 587-3673

3714 Alliance Dr, Suite 300,
Greensboro, NC 27407.

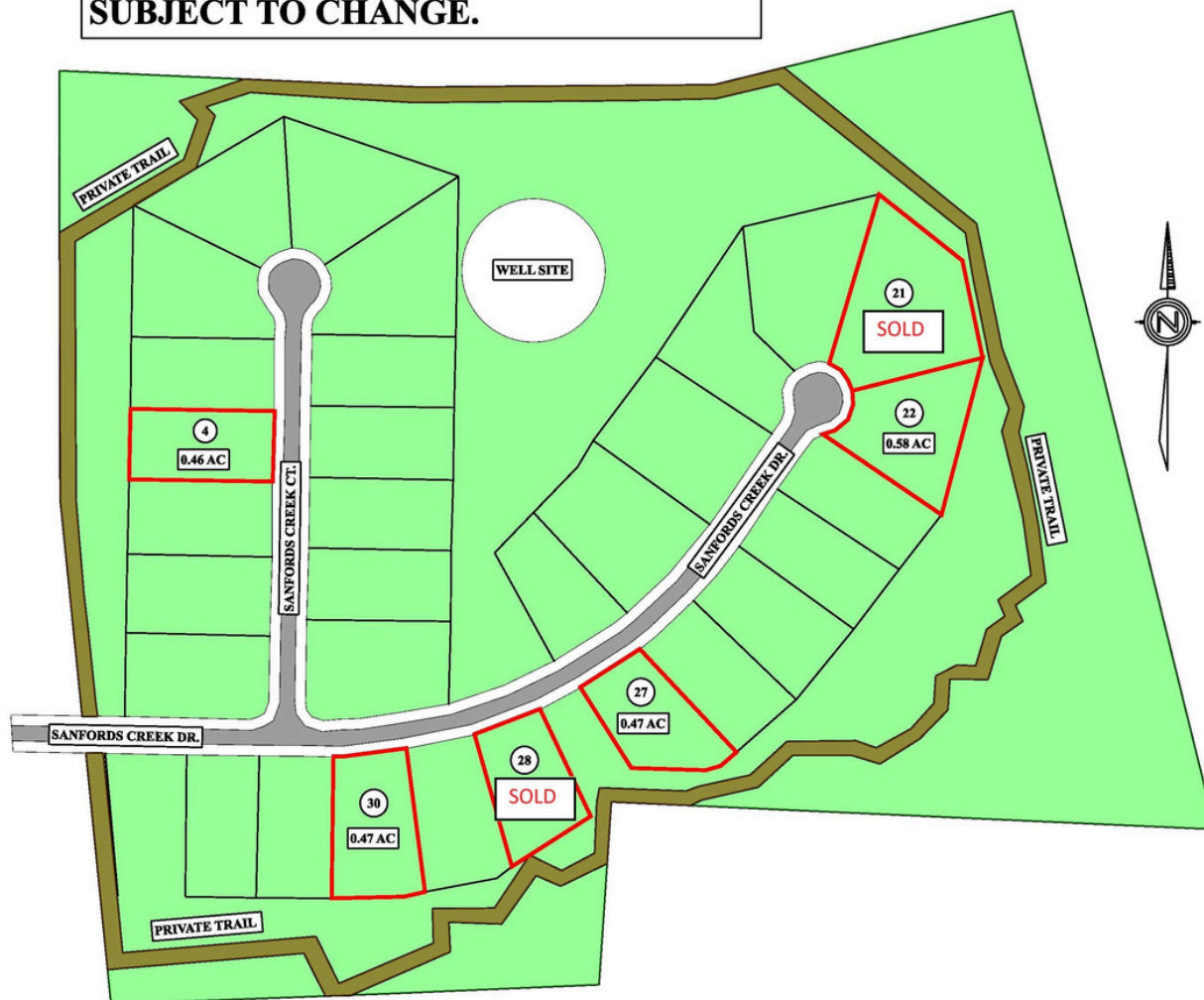


A Beautiful New
Neighborhood brought to
you by M & J Developers
and Advantage Build.

www.mjdevelopers.com/sanfords-creek



**FOR ILLUSTRATIVE PURPOSES ONLY.
NOT DRAWN TO SCALE.
SUBJECT TO CHANGE.**



SANFORDS CREEK

COMMUNITY INFORMATION

The Sanfords Creek subdivision, located in Guilford County, offers everything you would want for your Custom Home site - an established neighborhood with a convenient commute to anywhere in the Triad!

**M & J DEVELOPERS INC. &
ADVANTAGE BUILD**

3714 Alliance Dr. Suite 300,
Greensboro, NC 27407.



Lot Number	Acreage	Price
4	0.46	\$75,000
21	0.84	SOLD
22	0.58	\$75,000
27	0.47	\$75,000
28	0.53	SOLD
30	0.47	HOME FOR SALE

INTERESTED? CONTACT US:

(336) 601-7259

(336) 587-3673