



# M & J DEVELOPERS

## FAIRGROVE MEADOWS

### Features:

- 60+ Premier Homesites
- Cul-de-sac lots available
- Lot Sizes 0.69 - 1.95 Acres
- Custom Plan Design Services
- Convenient Access to Greensboro, Stokesdale, Reidsville, Summerfield, and more!

### CONTACT US

(336) 601-7259

(336) 543-3810

3714 Alliance Dr, Suite 300,  
Greensboro, NC 27407.



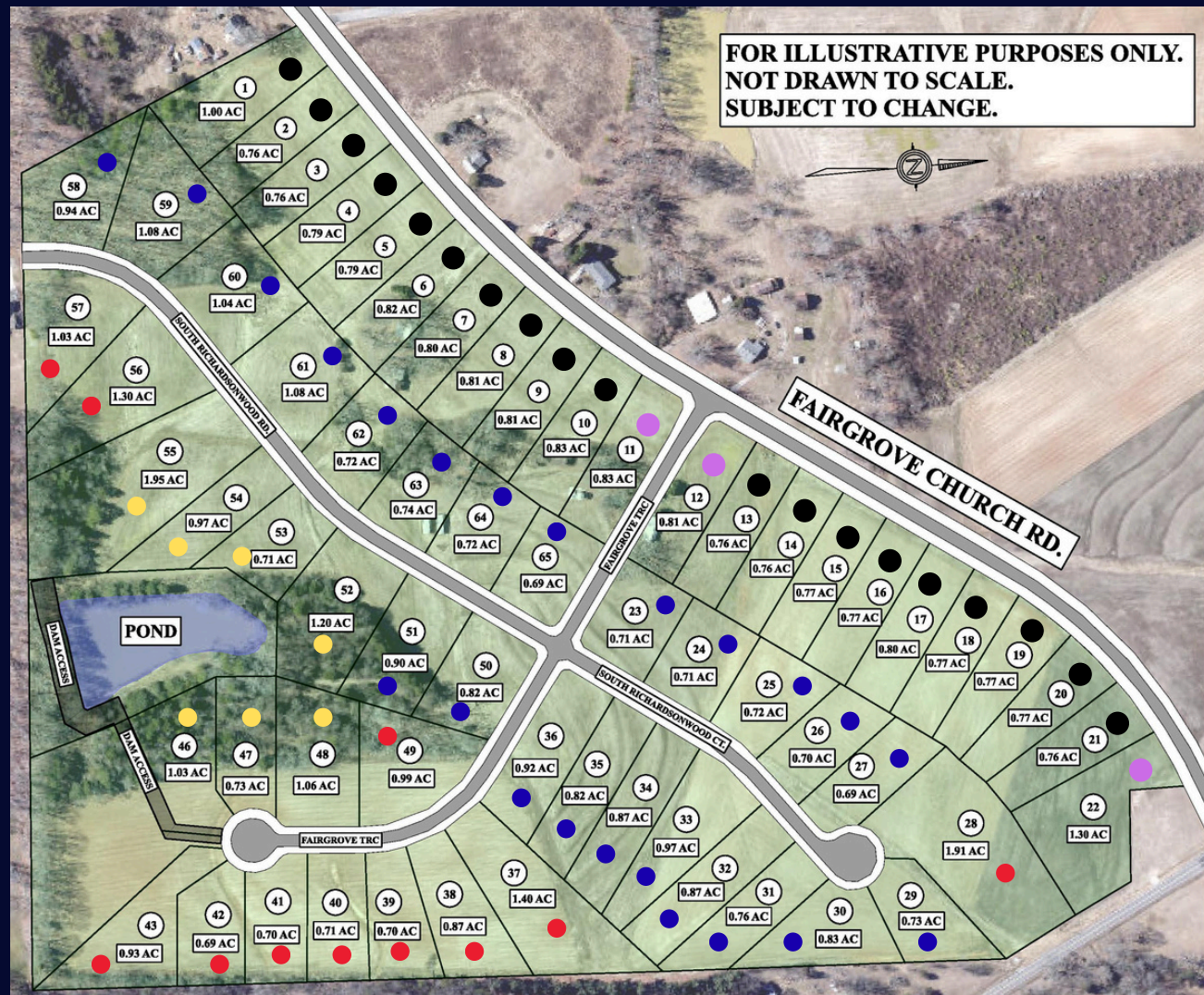
A Beautiful New  
Neighborhood brought to  
you by M & J Developers  
and Advantage Build.

[www.mjdevelopers.com/fairgrove-meadows](http://www.mjdevelopers.com/fairgrove-meadows)

# FAIRGROVE MEADOWS

## Lot Pricing Information:

- \$67,500
- \$80,000
- \$82,500
- \$87,500
- Lots Sold



### COMMUNITY INFORMATION

Perfectly situated at the Guilford County and Rockingham County Line, Fairgrove Meadows subdivision offers everything you would expect from a small country town and has easy access to all of the amenities of surrounding areas.



### INTERESTED? CONTACT US:

(336) 601-7259

(336) 543-3810

**M & J DEVELOPERS INC. &  
ADVANTAGE BUILD**

3714 Alliance Dr. Suite 300,  
Greensboro, NC 27407.

