



**M & J  
DEVELOPERS**

## **COBB FARM**

### **Features:**

- 14 Lots - Many sightlines of the beautiful Lake Hunt.
- 1.0 - 2.8 Acre Lots.
- Convenient access to Greensboro, Eden, Burlington, Stokesdale, Browns Summit, Danville, VA.
- Custom Design & House Plan to fit your needs.



### **CONTACT US**

**(336) 601-7259**

**(336) 543-3810**

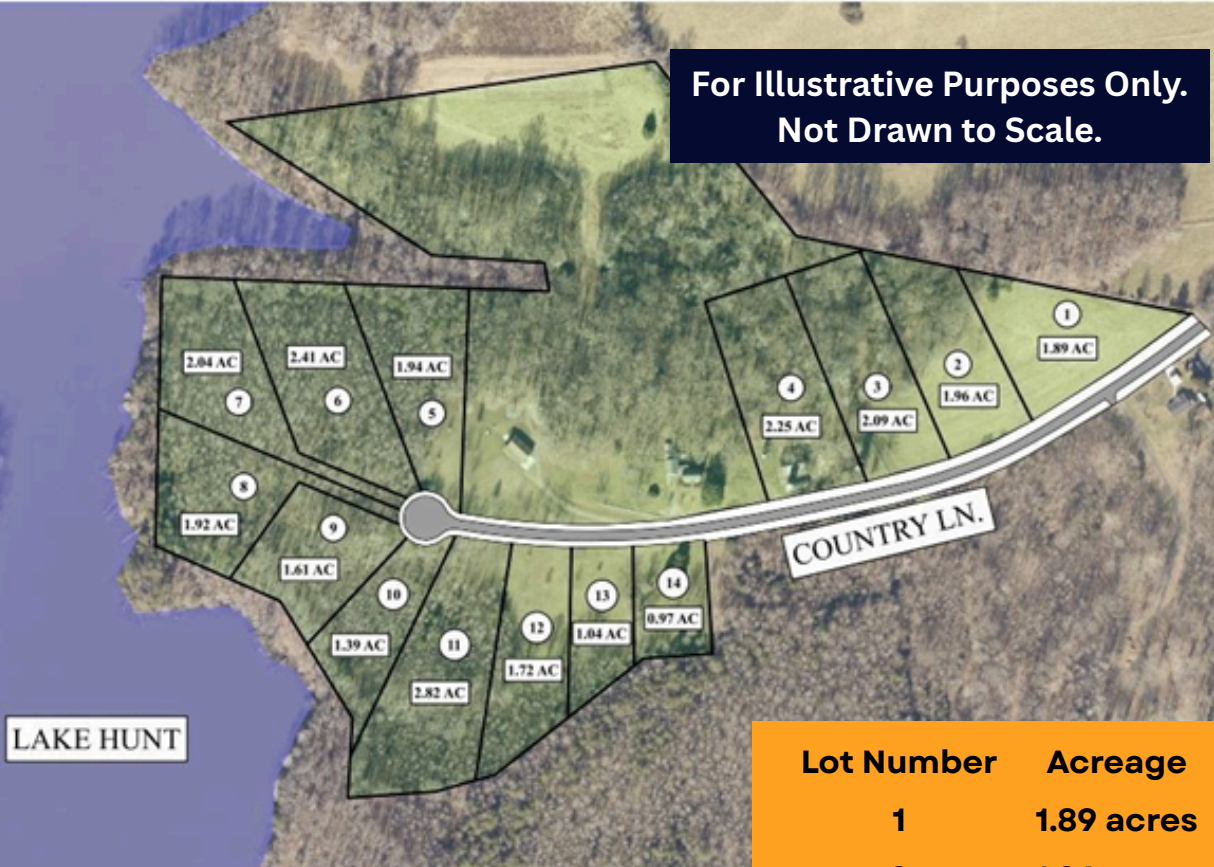
3714 Alliance Dr, Suite 300,  
Greensboro, NC 27407.



A Beautiful New  
Neighborhood brought to  
you by M & J Developers  
and Advantage Build.

**[www.mjdevelopers.com/cobb-farm](http://www.mjdevelopers.com/cobb-farm)**

For Illustrative Purposes Only.  
Not Drawn to Scale.



# LOT INFORMATION:

INTERESTED? CONTACT US:

(336) 601-7259

(336) 543-3810

Lot Number	Acreage	Price
1	1.89 acres	Sold
2	1.96 acres	Sold
3	2.09 acres	Sold
4	2.25 acres	Sold
5	1.94 acres	Sold
6	2.41 acres	Sold
7	2.04 acres	Sold
8	1.92 acres	Sold
9	1.61 acres	Sold
10	1.39 acres	Sold
11	2.82 acres	Sold
12	1.72 acres	Sold
13	1.04 acres	\$85,000
14	0.97 acres	Sold

# COBB FARM

## COMMUNITY INFORMATION

Reidsville is a vibrant community offering some of the best outdoor recreation in the area. Check out [www.riseupreidsville.com/lakes](http://www.riseupreidsville.com/lakes) or [www.riseupreidsville.com/trailsandparks](http://www.riseupreidsville.com/trailsandparks) for more information.

## M & J DEVELOPERS INC. & ADVANTAGE BUILD

3714 Alliance Dr. Suite 300,  
Greensboro, NC 27407.

